

Savin®

C6055/C7570

Color Digital Imaging System

FAST >

EASY >

COPY >

PRINT >

COLOR >



Engineered for outstanding color
and exceptional versatility.

Make an immediate impact on productivity.

To stay ahead of the competition, your organization has to move quickly, work harder, stay focused and deliver outstanding results, every single day. That's where the Savin C6055/C7570 Series comes in. These innovative color multifunctional products (MFPs) provide an unprecedented combination of high-speed productivity, spectacular image quality, proven reliability, and cost-effective, easy operation. With the fastest output speeds in their class, the Savin C6055 and Savin C7570 set a new industry standard for color and black & white performance.



Find critical functions quickly with the user-friendly, full-color touch-screen.

Maximum Productivity and Convenience

You can't worry about tomorrow if you can't deliver today. That's why the Savin C6055/C7570 Series provides superior speed and reliability. So you get immediate turnaround for critical jobs, and the absolute confidence that these systems will be ready when you need them.

- Outpace similarly equipped systems with the Savin C6055, which delivers 55 color and 60 black & white copies per minute (cpm), or the Savin C7570, which reaches speeds of 70 color and 75 black & white cpm. Both offer duplexing at 100% of rated speed.
- Access exactly what you need in a few menu selections with the large, full-color WVGA control panel. This intuitive LCD touch-screen comes

standard on all Savin color MFPs, so you can expand the fleet without retraining users.

- Handle quick-turn jobs with a shorter warm-up time and a faster first-copy time than any other high-speed color device in this segment.
- Maximize productivity by reloading paper while the current job is still running. With all options, these systems hold up to 7,400 sheets.
- Place these MFPs virtually anywhere, especially in locations where floor space is at a premium, with their small footprints and wireless interface options.
- These systems are designed with the user in mind—both systems are easy for anyone to operate, from the newest employee to the most seasoned production professional.

Put Your Best Image Forward

Full-color documents get more attention, so they have to look amazing. Choose the Savin C6055/C7570 Series to deliver high-quality color documents that strengthen your image, impress your customers and build your reputation.

- Ensure exceptional image quality with true 600 dpi scanning, printing and copying, while other Savin technologies provide vivid, saturated colors and sharp, elegant black & white documents.
- Expect enhanced definition, consistent coverage and density with new Savin toner technology. Smaller, more uniform particles result in smooth blends, solid fills and crisp text.
- Ensure consistent color for the entire length of the run with constant measurements and adjustments that are applied automatically during operation.

Dramatic Cost Savings

The Savin C6055 and Savin C7570 are complete color solutions. Eliminate outsourcing, consolidate output from multiple laser/inkjet printers and significantly reduce operating costs while increasing your profitability.

- Fast-paced offices can print full-color marketing collateral and forms on demand to minimize inventory costs and eliminate the risk of discarding obsolete materials.
- Graphics houses can utilize these flexible color MFPs to produce attractive layouts, client mock-ups and contact sheets quickly and cost effectively.
- Copy shops and quick printers can add the Savin C6055/C7570 Series to grow market share and generate new revenue streams from customers who need immediate turnaround.

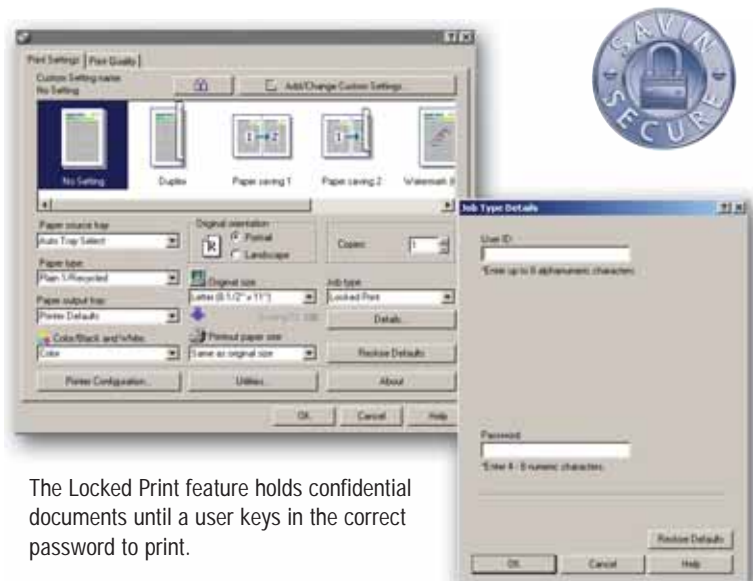
- CRDs and commercial printers can use these systems as an alternative to offset for short-run color jobs, improving workflow and load-balancing.

Highly Versatile Performance

Engineered to integrate multiple critical functions into a single, powerful system, the Savin C6055/C7570 Series includes an extremely versatile feature set.

- Take advantage of a comprehensive array of copying, scanning, faxing and document storage capabilities, as well as multiple options for network printing.
- Select the Savin controller for streamlined production in general offices. Its icon-driven setup is very easy to operate, even for inexperienced users. Users can set up RPCS or PCL 5c drivers, with Adobe PS3 available as an option.

Security Features



The Locked Print feature holds confidential documents until a user keys in the correct password to print.



Keep sensitive documents — and the network — safe with proven security features. Prevent access to the system to all but authorized users.

C6055/C7570 Color Digital Imaging System

FAST >

EASY >

COPY >

PRINT >

COLOR >

In-House Color Printing



Eliminate outsourcing by producing all your full-color documents in-house.

Flexible Professional Finishing

Use the Savin C6055/C7570 Series to produce the full-color, professionally finished documents. Both systems can be configured with a wide range of accessories.

- Load virtually any paper grade—up to 80 lb. Cover through the Paper Trays, or up to 110 lb. Cover through the Bypass.
- Maximize uptime with an optional Large Capacity Tray that accommodates paper sizes up to 12" x 18", weights up to 110 lb. Cover, and holds up to 2,000 sheets.
- Entice customers to try new formats with a Z-Fold Unit that incorporates 11" x 17" sheets into 8.5" x 11" documents, or 8.5" x 11" sheets into 5.5" x 8.5" documents.
- Choose from three finishing options that collect, collate, and staple your documents, making them ready for distribution.

Advanced Security Technology

Both MFPs employ sophisticated security features to protect confidential documents and system access from unauthorized users.

- Ensure only authorized users and administrators gain access to the system with external (Windows, LDAP) and internal (basic and user code) authentication.
- Manage color usage more effectively by restricting access to color output (or other functions, such as finishing) by individual user.
- Rely on encryption to protect address book data, documents sent over the network and remote management access. The systems also support IP security protocols to encrypt every IP packet in the data stream for high-security applications.

Your Environmental Partner

Savin continues its long-standing commitment to developing solutions with environmentally friendly and superior energy- and supply-saving features, without compromising productivity, including:

- Quick Start-Up (QSU) Technology
- Power-Saving Sleep Mode
- Duplex and Combine Copy Modes
- Internal Toner Recycling Mechanism
- Low Noise Levels
- Minimal Ozone Emissions
- Restriction of Hazardous Substances (RoHS) Compliant



Cover Interposers (optional)

Feed pre-printed sheets from one or two sources for front and back covers.

Z-Fold Unit (optional)

Folds larger sheets for insertion in smaller-format documents.

100-Sheet Automatic Reversing Document Feeder (ARDF) (standard)

Scans a color page in 1.0 seconds or a black & white page in 0.8 seconds.

WVGA Control Panel (standard)

Program any task in seconds with the large, full-color LCD touch-screen.

3,000-Sheet Finishers (optional)

Choose from 50- or 100-sheet stapling and 2- or 3-hole punching.

2,000-Sheet Booklet Finisher (optional)

Fold and staple documents to produce finished booklets.

Tandem 2 x 1,100-Sheet Paper Tray, Two 550-Sheet Paper Trays and Bypass (standard)

These MFPs hold 3,400 sheets in the standard configuration, and up to 7,400 sheets with optional paper supplies.

Large Capacity Trays (optional)

The A3/DLT tray holds 2,000 sheets, up to 12" x 18" and 110 lb. Cover. The A4/LT tray holds 4,000 sheets, up to 8.5" x 11" and 34 lb. Bond.



Create a configuration that delivers the right features and functions for your most demanding customers.



SR4010 Finisher

With the SR4010 Finisher, you can choose multiple staple locations on documents of up to 50 pages.



SR5000 Finisher

The SR5000 Finisher can staple up to 100 sheets and requires the Finisher Adapter Type C.



SR4020 Booklet Maker

The SR4020 can staple up to 50 sheets in multiple positions or saddle stitch up to 15 sheets (60 page booklets).



RT4000 DLT/LCT

The RT4000 DLT/LCT utilizes the system Bypass Tray for a straight paper path. This helps to reliably feed up to 110 lb. Cover stock (300 g/m²), when combined with its Air Assist Unit.

COPIER SPECIFICATIONS

Configuration	Console
Scanning Element	Flatbed with moving 3-line CCD array image-scanning
	Chemical toner
Toner	
System Memory	320GB (160GB x 2)
Document Feeder	Standard 100-Sheet ARDF
Copy Resolution	600 x 600 dpi
Color	256 Levels
Image Density	Manual & Automatic
Quantity Indicator	1 - 9,999
Original Type	Sheet/Book/Object
Original Size	Up to 11" x 17"
Warm-Up Time	C6055 < 90 sec. C7570 < 75 sec.
First-Copy Out Time	C6055 5.7/7.5 sec. (BW/FC) C7570 4.9/6.4 sec. (BW/FC)
Speed	C6055 60/55 cpm (BW/FC) C7570 75/70 cpm (BW/FC)
Standard Paper Capacity	1st Tray 1,100 x 2 550 sheets x 2nd & 3rd Trays, 100-Sheet Bypass Tray
	7,400 sheet std. max capacity
Paper Size	5.5" x 8.5" to 12" x 18"
Paper Weight	14 lb. Bond - 80 lb. Cover (std. Trays) 17 lb. Bond - 90 lb. Index (Duplex) 14 lb. Bond - 110 lb. Cover (Bypass)
Magnification	7 reduction and 5 enlargement
Zoom	25% to 400% in 1% increments
Power Source	C6055/120 V/20A/60 Hz C7570/208-240V/20A/60Hz
Dimensions (WxDxH)	29.5" x 33.5" x 43.1" (excluding ARDF)
Weight	< 656.9 lb.

COPIER FEATURES

Auto Paper Selection, Auto Reduce/Enlarge, Auto Start, Auto Tray Switching, Auto Image Density, Auto Reduce and Enlarge, Duplex, User Codes, Stapling, Color Erase/Convert, Electronic Sort, Image Rotation, Rotate Sorting, Series Copy, Doc Server, User Tools, Job Presets, Book/Series/Combine, Insert Cover/SlipSheet, Chaptering, Tabs, OHP, Color/Image Creation, Sample Copy, Energy Saver, Image Adjustment, Multiple Security Options

PRINTER SPECIFICATIONS

CPU	Intel Pentium - M 1.4GHz
RAM	1,536MB (std./max)
HDD	320GB (160GB x 2)
Standard Interfaces	Ethernet (100BaseTX10 Base-T) USB2.0
Optional Interfaces	IEEE1284, Wireless LAN (IEEE802.11a/g) Bluetooth, Ethernet 1000 Base-T
Network Protocol	TCP/IP, IPX/SPX, SMB, Apple Talk
Operating Systems	Windows: 2000/XP/Vista/Server 2003. Netware: 3.12, 3.2, 4.1, 4.11, 5.0, 5.1, 6, 6.5. Unix, Sun Solaris, HP-UX, SCO OpenServer, RedHat Linux, IBM AIX. MAC: OS 8.6 - 9.2x, OS X 10.1 or later
PDL	RPCS, PCL5c, PCL6, Adobe PS3 (optional)
Print Resolution	600 dpi
Fonts for PCL	35 Intellifonts, 10 TrueType Fonts,
Fonts for PostScript	136 Adobe PostScript Type1 Fonts

SCANNER SPECIFICATIONS

Scanning Resolution	Up to 600 dpi
Scan Area	Up to 11" x 17"
Scan Speed	81/69 ipm (BW/FC)
Compression	BW/Binary - TIFF MH/MR/MMR Full Color/Grayscale JPEG (5 levels)
Standard Interfaces	10BaseT/100BaseTX, Wireless LAN

Scanner Features	BW/OCR, BW/FC Photo, BW/FC Text, Auto Color, Auto Density, Image Rotation, Mixed Size, SADF Batch
Scan-To Destinations	Scan-To-Email, Scan-To-Folder, Scan-To-URL, TWAIN Scanning
Scan-To-Email	
Authentication	SMTP, POP before SMTP
Resolution	Default 200 dpi to 600 dpi
Register E-mail	Max. 2,000 addresses
Addresses in HDD	
Register Group	Max. 500 addresses
Addresses in HDD	
LDAP	Yes, up to 5 LDAP Servers
File Type	Single/Multi-Page PDF, Single/ Multi-Page TIFF, High Comp. PDF
File Size	128 - 102,400 KB
	*If file exceeds size, it will be divided into multiple e-mails.
Scan-To-Folder	
Protocol Support	SMB, FTP, NCP
Security	Client folder log-in, Encryption of name and password during trans. Default 200 dpi to 600 dpi Max. 2,000
Resolution	
Client Folder	Addresses in HDD
Group Addresses	Max. 100 destinations
Size Restriction	None
File Type	Single/Multi-Page PDF, Single/ Multi-Page TIFF, High Comp. PDF

DOCUMENT SERVER SPECIFICATIONS (STANDARD)

HDD Capacity	191.8GB
Max. Stored Documents	3,000
Max. Pages per Document	2,000
Max. Stored Pages	15,000

FAX SPECIFICATIONS (OPTIONAL)

Circuit	PSTN, PBX
Compatibility	ITU-T (CCITT) G3, Additional G3 optional
Resolution	200 x 100/200 dpi (400 dpi w/opt. SAF memory)
Compression Method	MH, MR, MMR, JBIG
Scanning Speed	0.5 sec
Modem Speed	33.6 Kbps - 2,400 bps
Transmission Speed	G3: Approx. 2 sec.
Memory Backup	1 Hour
Quick/Speed Dials	2,000 numbers
Group Dials	100 groups (500 per group)
Energy Saver	Standard

ACCESSORIES

RT4000 DLT/LCT	
Paper Capacity	2,000 Sheets
Paper Size	up to 12" x 18"
Paper Weight	14 lb. - 110 lb. Cover
Size	38.1" x 28" x 29.3"
Weight	192 lbs.
RT43/LCT	
Paper Capacity	4,000 Sheets
Paper Size	8.5" x 11"
Paper Weight	14 lb. - 34 lb. Bond
Size	12" x 18" x 26"
Weight	44 lbs.
CS391 9-Bin Mailbox	
Number of Bins	9
Stack Capacity of Bins	100 Sheets
Paper Size	5.5" x 8.5" - 11" x 17"
Paper Weight	14 lb. - 34 lb. Bond
Size	21" x 24" x 26"
Weight	33 lbs.
Z-Fold Unit	
Paper Size	8.5" x 11" and 11" x 17"
Paper Weight	17 lb. - 20 lb. Bond
Size	7" x 24" x 38"
Weight	121 lbs.

2 Source Cover Interposer

Paper Size	5.5" x 8.5" - 12" x 18"
Paper Weight	17 lb. Bond - 110 lb. Index
Size	28" x 29" x 50"
Weight	99 lbs.

SR5000 100-Sheet Staple Finisher**

Capacity (Proof Tray)	500 Sheets (8.5" x 11" or smaller) 250 Sheets (8.5" x 14" or larger)
Paper Size	5.5" x 8.5" - 12" x 18"
Capacity (Shift Tray)	8.5" x 11" - 3,000 Sheets 8.5" x 14" - 11" x 17" - 1,500 Sheets
	12" x 18" - 1,000 Sheets
Paper Weight	14 lb. Bond - 110 lb. Cover
Staple	8.5" x 11" - 100 Pages 8.5" x 14" - 11" x 17" - 50 Pages
Size	31" x 29" x 39"
Weight	165 lbs.
	**SR5000 must include Finisher Adapter Type C.

SR4010 50-Sheet Staple Finisher

Capacity (Proof Tray)	250 Sheets (8.5" x 11" or smaller) 50 Sheets (8.5" x 14" or larger)
Paper Size	5.5" x 8.5" - 12" x 18"
Capacity (Shift Tray)	8.5" x 11" - 3,000 Sheets 8.5" x 14" - 11" x 17" - 1,500 Sheets
Paper Weight	14 lb. Bond - 110 lb. Cover
Staple	8.5" x 11" - 50 Pages 8.5" x 14" - 11" x 17" - 30 Pages
Size	26" x 24" x 38"
Weight	119 lbs.

SR4020 Booklet Maker

Capacity (Proof Tray)	250 Sheets (8.5" x 11" or smaller) 50 Sheets (8.5" x 14" or larger)
Paper Size	5.5" x 8.5" - 12" x 18"
Capacity (Shift Tray)	8.5" x 11" - 2,000 Sheets 8.5" x 14" - 11" x 17" - 1,000 Sheets
Paper Weight	14 lb. Bond - 110 lb. Cover
Staple	8.5" x 11" - 50 Pages 8.5" x 14" - 11" x 17" - 30 Pages
Saddle Stitch Staple***	8.5" x 11" - 12" x 18" - 15 Pages
Size	26" x 24" x 38"
Weight	139 lbs.
	***Paper weight for saddle stitch stapling is 28 lb. Bond max.

ADDITIONAL ACCESSORIES

Punch Unit for SR5000	
Punch Unit for SR4010/SR4020	
Jogger Option for SR4010/SR4020	
Legal Tray for RT43 LCT Type 1075	
11" x 17" Tray Type 2105	
Copy Connector Kit Type 3260	
Tab Sheet Unit Type 3260	
File Format Converter Type E	
HDD Overwrite Security Kit Type H	
Copy Data Security Kit Type F	
HDD Encryption Unit Type A	
Adobe PostScript3 Type C7500	
IEEE802.11a/g Type J	
IEEE1284 Type A	
Bluetooth Interface Unit Type 3245	
Browser Unit Type D	
Java VM Card Type F	
G3 Interface Kit Type C7500	
Key Counter Bracket Type 1027	
Reader Key Card Bracket Type B	
Key Card I/F Unit Type A	
Gigabit Ethernet Type B	